

No Plication required!

MiniMizer Extra Gastric Band

MiniMIZER
EXTRA



 **BARIATRIC**
SOLUTIONS

The difference makes it happen.
MiniMizer Extra Gastric Band

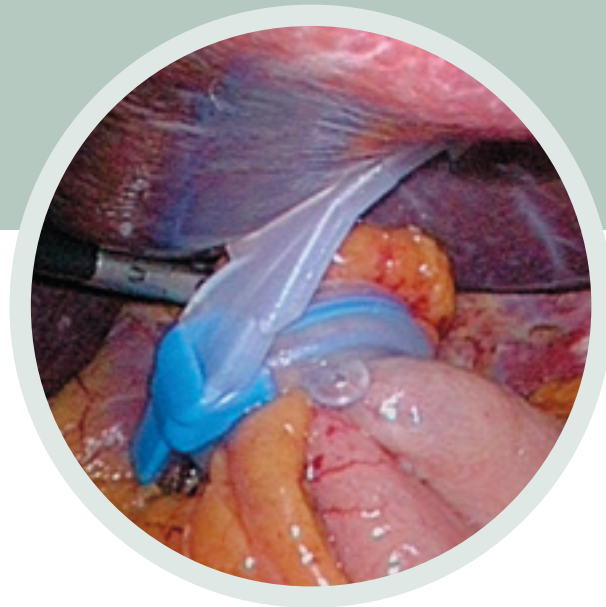


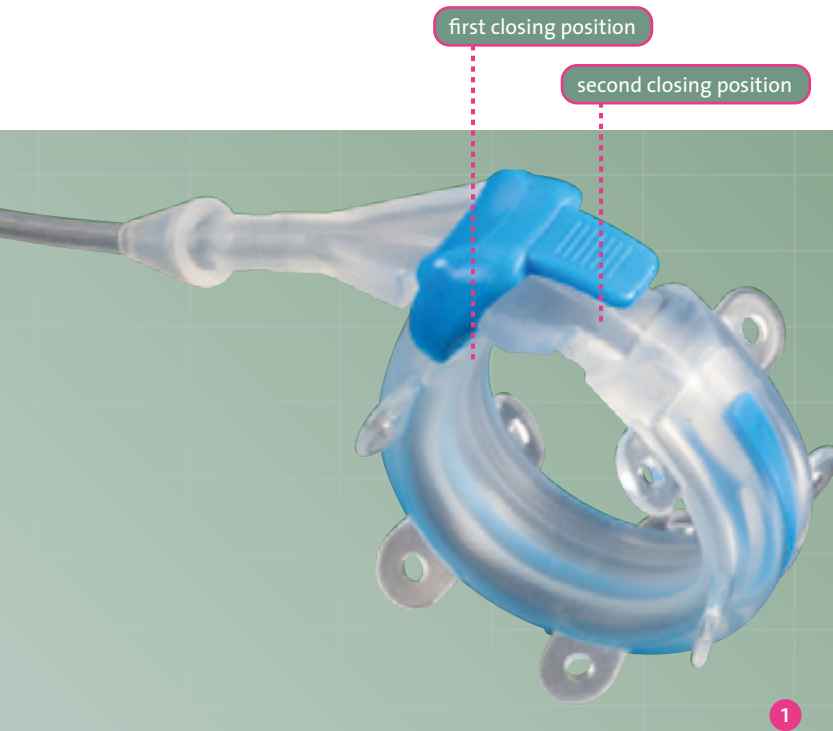
MiniMIZER
EXTRA

Fibroblasts ingrowth creates autofixation:
fixation not required

MiniMizer Extra without plication:

- suitable for re-do banding
- suitable for adjustable Banded Bypass and Banded Sleeve

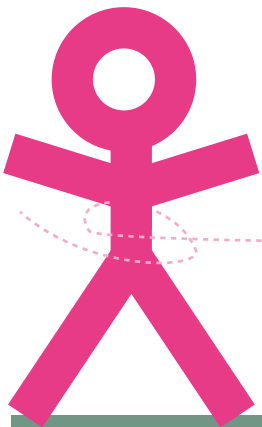


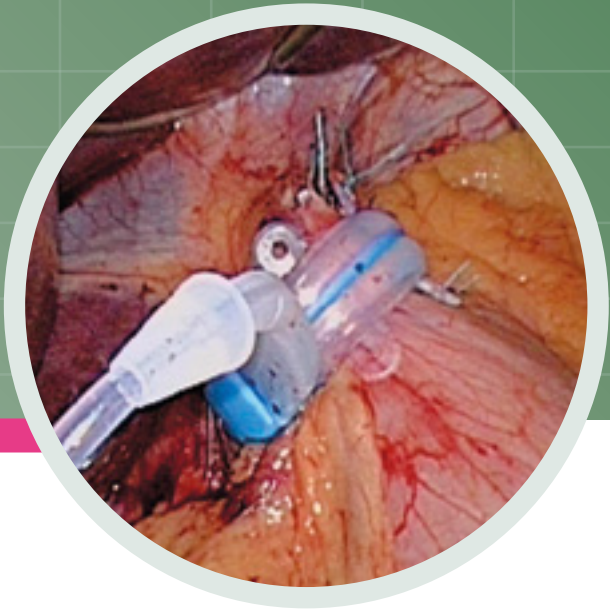


The major differences:

- 1 two closing positions available:
less postoperative adjustments
- 2 fixation without plication:
reduced slipping
- 3 inner reservoir integrated in gastric band
precise, predictable concentric filling

First closing position 10.5cm (\varnothing 31 mm)
Second closing position 9.75cm (\varnothing 26 mm)





2



3

Precise and predictable concentric filling



- 4 pre-shaped gastric band for easy positioning
- 5 small port (\varnothing 13 mm) for sub-xyphoidal placement
- 6 medium port (\varnothing 18 mm) for placement on the rectus sheath or sub-costally

port small

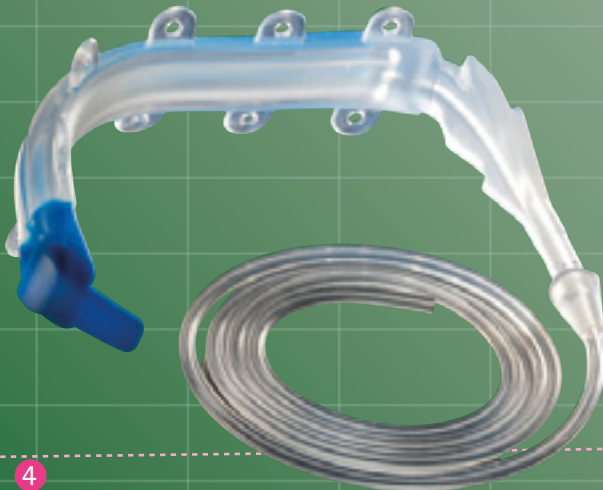


5

port medium

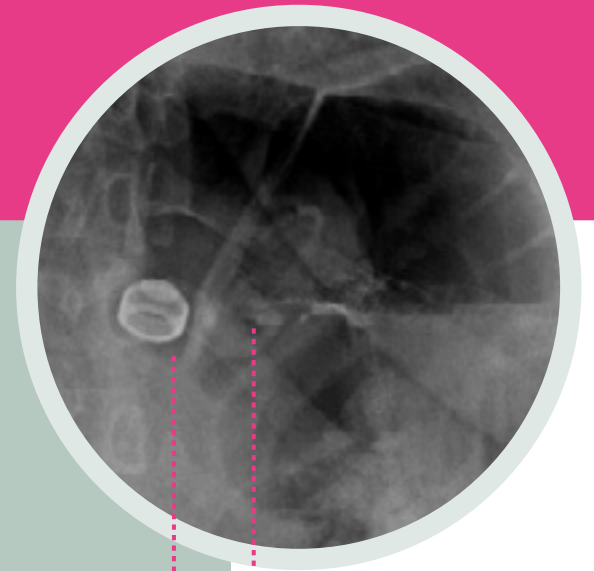


6



4

	Fixation by sutures without plication	By tissue ingrowth without plication
Center	Maaseik, Belgium	Lodz, Poland
Year of Surgery	2003-2009	2005-2009
Implanted MiniMizer bands	583	372
Follow-up	92.1%	95.6%
Slippage	0.85%	1.61%
Migration	0.51%	0.27%
Dilated esophagus	0.17%	0.54%
Band removal	0.68%	1.07%
Dysphagia	3.25%	4.4%
Port infection	1.37%	2.15%
Male	7%	23%
Female	93%	77%
Average age	44.4	44.8
BMI (kg/m ²)	35-60	32-64
Average BMI	44.8	44.4
% EWL	55	62



MiniMizer Extra

MiniMizer Port



Bariatric Solutions GmbH
Kaltenbacherstrasse 24
CH - 8260 Stein am Rhein

Phone: +41 - 52 741 - 65 00
Fax: +41 - 52 741 - 65 02
info@bariatric-solutions.com
www.bariatric-solutions.com

